

**FEBRUARY 2025**

The quality parts for Land Rovers

## Rear Towing Hook Loop Kit



**DA5179**

Defender 2020 onwards  
With Finishers / Pair /Black  
Equip your Defender with these heavy-duty cast metal rear tow loops and finishers. This kit includes everything needed to install permanent towing loops, combining practicality with a robust, off-road appearance.

2x Genuine Land Rover Black Towing Loops  
2x Genuine Land Rover Plastic Finishers  
2x Spare Wheel Arch Clips

A practical upgrade that's built to last and designed to integrate seamlessly with your Defender.

## A Frame Ball Joint Repair Kit



**DA5204**

A Frame Britpart XS Ball Joint Repair Kit  
Defender / Discovery 1  
Range Rover Classic

## Rear Floor Support



**DA4982**  
Rear Floor Support  
Discovery 1

## Wheel Arch Back Extensions

**390017** Right Hand Side  
**390018** Left Hand Side  
Front of Rear Wheel Arch  
Discovery 1 - 2 Door - Inner trim will need trimming  
Range Rover Classic - 2 Door

**390018**



## Rear Wheel Arch Front Extension Panels

**DA2547N** Left Hand Side - with seatbelt anchor  
**DA2547O** Right Hand Side- with seatbelt anchor  
Rear Arch - 2 Door  
Discovery 1 / Range Rover Classic

**DA2547N**



## Headlamp Back Plates

**DA4991** Left Hand Side  
**DA4992** Right Hand Side  
Discovery 1 / Discovery 2

**DA4991**



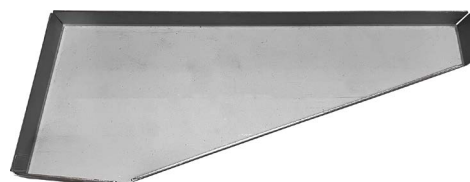
## Brembo Brake Disc



**LR153550BR**  
Rear / Single / Solid  
Range Rover - 2022 onwards  
Range Rover Sport - 2023 onwards

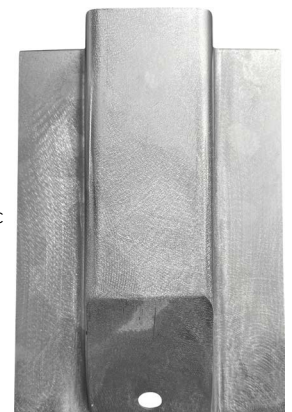
## Front Sill Brackets

**DA4988** Right Hand Side  
**DA4989** Left Hand Side  
Discovery 1 / Range Rover Classic



## B Post Repair Panel

**DA4987**  
Discovery 1  
Range Rover Classic



Part numbers are used for identification purposes only and do not imply or indicate the identity of the manufacturer. E&OE.

britpart.com

### Safety Devices Rear Access Ladder

**DA3566**

Defender 90 / 110 / 130 - 2020 onwards

Roof access ladder that can be fitted to either side of the vehicle. It can be installed standalone or in conjunction with the Safety Devices Roof Rack Assembly.



Made of a folding construction with dual securing methods and a key locking mechanism. Requires drilling of the trim panels below the rear window to allow installation into the existing body mounts beneath. When deployed, the height from the floor to the lowest step of the ladder is 585mm at normal ride height (660mm at max and 550mm at min).



### Door Rubber Retainer

**DA4990**

Lower Door Rubber Retainer  
Discovery 1  
Range Rover Classic



### A Post Repair Panels

**DA5194**

Right Hand Side

**DA5195**

Left Hand Side

Discovery 1  
Range Rover Classic

**DA5194**



### Bulkhead Mounting Points

**DA5217**

**DA5216**

Left Hand Side

**DA5217**

Right Hand Side  
Discovery 1  
Range Rover Classic



### Inner Wing Repair Panels

**DA4983** Right Hand Side

**DA4984** Left Hand Side

Discovery 1  
Range Rover Classic



**DA4984**

### Safety Devices Roll Cages

**RBL3087SSSFWD**

10-Point External/Internal Multi-point External/Internal Bolt-In Roll Cage - Black  
Defender 110 - Soft Top - 5-door - 1990 - 2016 - for vehicles with forward facing seats  
One Ten - Soft Top - 5-door - 1983 - 1990 - for vehicles with forward facing seats



**RBL3087SSSINWARD COMING SOON!**

10-Point External/Internal Multi-point External/Internal Bolt-In Roll Cage - Black  
Defender 110 - Soft Top - 5-door - 1990 - 2016 - for vehicles with inward facing seats  
One Ten - Soft Top - 5-door - 1983 - 1990 - for vehicles with inward facing seats

